



Government of India  
Ministry of Earth Sciences



India Meteorological Department

## PRESS RELEASE - 3

Time of issue: 1300 hours IST

Dated: 01-10-2021

### Sub: Cyclonic Storm 'Shaheen' over central parts of north Arabian Sea

Yesterday's Depression over northeast Arabian Sea off Gujarat coast moved west-northwestwards and intensified into a deep depression around midnight (2330 hours IST of 30<sup>th</sup> September). Continuing to move further west-northwestwards, it intensified into the Cyclonic Storm "Shaheen" over northeast Arabian Sea in the early morning (0530 hours IST) of today, the 1st October, 2021. At 0830 hrs IST of today, it lay over central parts of north Arabian Sea, near latitude 23.2°N and longitude 64.9°E, about 440 km west-northwest of Devbhoomi Dwarka (Gujarat), 490 km east-southeast of Chabahar Port (Iran) and 660 km east-southeast of Muscat (Oman).

It is very likely to further intensify into a Severe Cyclonic Storm during the next 12 hours and move west-northwestwards skirting Makran coast during next 36 hours. Thereafter it is likely to re-curve west-southwestwards, move towards Oman coast across Gulf of Oman and weaken gradually.

**The system is moving away from the Indian coast and it will not hit Indian coast.**

Date/Time(IST)	Position (Lat. °N/ long. °E)	Maximum sustained surface wind speed (Kmph)	Category of cyclonic disturbance
01.10.21/0830	23.2/64.9	75-85 gusting to 95	Cyclonic Storm
01.10.21/1130	23.3/64.3	80-90 gusting to 100	Cyclonic Storm
01.10.21/1730	23.4/63.7	85-95 gusting to 105	Severe Cyclonic Storm
01.10.21/2330	23.6/63.0	95-105 gusting to 115	Severe Cyclonic Storm
02.10.21/0530	23.8/62.3	100-110 gusting to 120	Severe Cyclonic Storm
02.10.21/1730	24.1/61.0	100-110 gusting to 120	Severe Cyclonic Storm
03.10.21/0530	24.3/59.5	90-100 gusting to 110	Severe Cyclonic Storm
03.10.21/1730	24.2/57.9	80-90 gusting to 100	Cyclonic Storm
04.10.21/0530	23.8/56.5	70-80 gusting to 90	Cyclonic Storm

### Warnings:

#### (i) Wind warning

- Gale wind speed reaching 75-85 kmph gusting to 95 kmph likely to prevail over northeast & adjoining northwest Arabian Sea during next 6 hours. It would gradually increase becoming 85-95 Kmph gusting to 105 Kmph over northwest and adjoining northeast Arabian Sea and adjoining Pakistan-Makran coasts from today evening and become 100-110 Kmph gusting to 120 Kmph from tomorrow morning. It will gradually reduce becoming 80-90 Kmph gusting to 100 Kmph over northwest Arabian Sea and adjoining Gulf of Oman from 3rd October morning and further reduce thereafter.
- Squally wind speed reaching 40-50 Kmph gusting to 60 Kmph likely to prevail along & off north Gujarat coast during next 12 hours.

#### (ii) Sea condition

- Sea condition will be high over northeast & adjoining northwest Arabian Sea during next 12 hours. It would become high to very high over north Arabian Sea & along and off Pakistan-Makran Coasts from the evening of today till morning of 03rd October. It would improve

Contact: Cyclone Warning Division, Office of the Director General of Meteorology,  
India Meteorological Department, Ministry of Earth Sciences.

Phone: (91) 11-24652484, FAX: (91) 11-24643128, 24623220, E-mail: [cwdhq2008@gmail.com](mailto:cwdhq2008@gmail.com), Website: [rsmcnewdelhi.imd.gov.in](http://rsmcnewdelhi.imd.gov.in)

Spatial rainfall distribution: Isolated: <25%, A few: 26-50%, Many: 51-75%, Most: 76-100%

Rainfall amount (mm): Heavy rain: 64.5 – 115.5, Very heavy rain: 115.6 – 204.4, Extremely heavy rain: 204.5 or more.

gradually becoming high over northwest Arabian Sea & adjoining Gulf of Oman from 3rd October evening.

(iii) **Sea condition** will be rough to very rough along & off north Gujarat coast during next 12 hours.

(iv) **Fishermen Warning**

- Fishermen are advised not to venture into north & adjoining central Arabian Sea, along & off Pakistan-Makran coasts and Gulf of Oman till 4th October morning.
- Fishermen are also advised not to venture into northeast Arabian Sea along & off north Gujarat coast during next 12 hours.

(v) **EXPECTED IMPACT & ACTION SUGGESTED**

- As the system is moving away from the Indian coast, no further impact is likely over the Indian Mainland.
- However, Fishermen as well as Mariners are advised to avoid the Sea areas specified above.

---

Contact: Cyclone Warning Division, Office of the Director General of Meteorology,  
India Meteorological Department, Ministry of Earth Sciences.

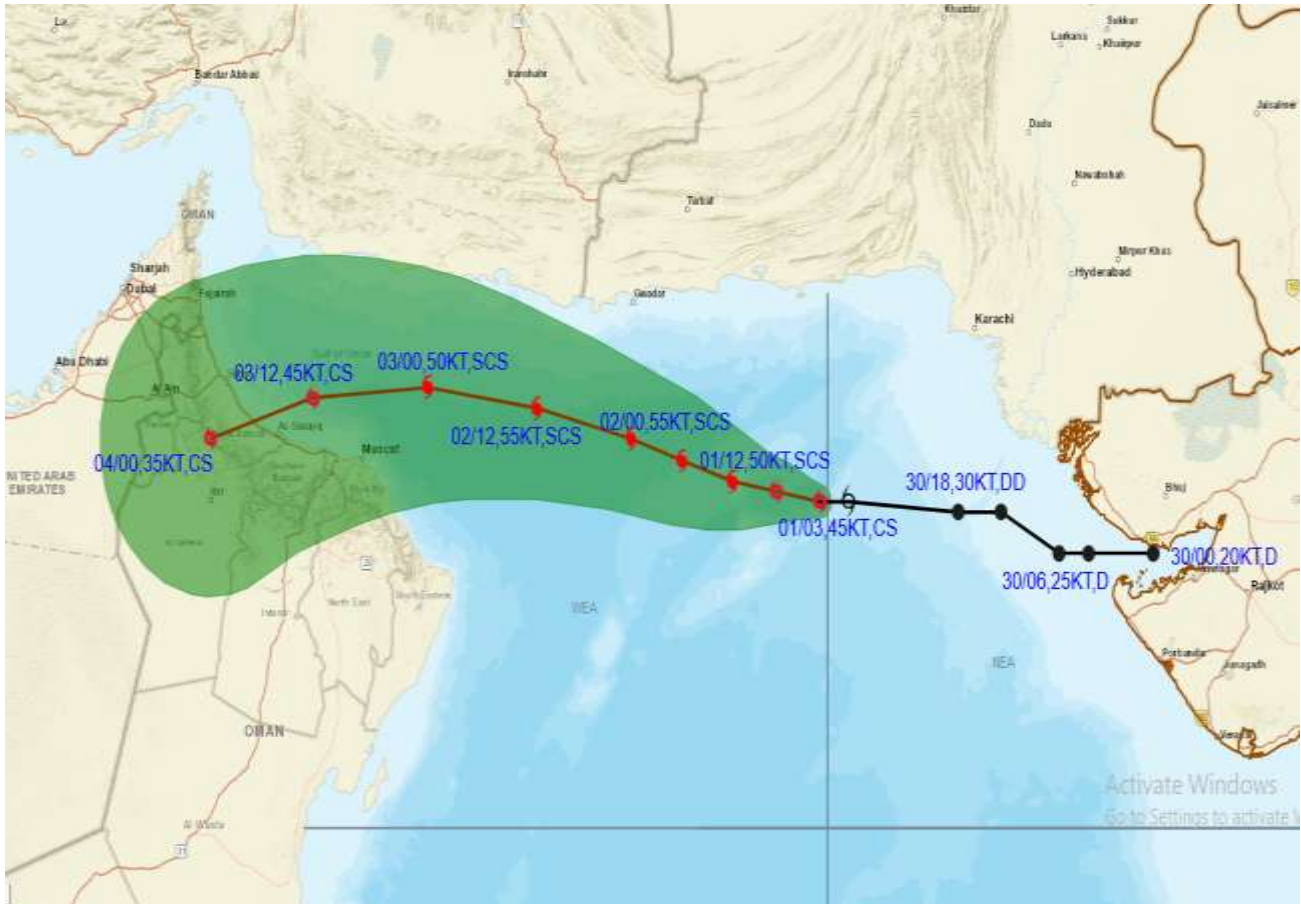
Phone: (91) 11-24652484, FAX: (91) 11-24643128, 24623220, E-mail: [cwdhq2008@gmail.com](mailto:cwdhq2008@gmail.com), Website: [rsmcnewdelhi.imd.gov.in](http://rsmcnewdelhi.imd.gov.in)

Spatial rainfall distribution: Isolated: <25%, A few: 26-50%, Many: 51-75%, Most: 76-100%

Rainfall amount (mm): Heavy rain: 64.5 – 115.5, Very heavy rain: 115.6 – 204.4, Extremely heavy rain: 204.5 or more.



**OBSERVED AND FORECAST TRACK ALONGWITH CONE OF UNCERTAINTY OF CYCLONIC STORM "SHAHEEN" OVER NORTHEAST ARABIAN SEA BASED ON 0300 UTC OF 1ST OCTOBER, 2021**



**DATE/TIME IN UTC**

**IST=UTC + 0530**

**L: LOW PRESSURE AREA**

**WML: WELL MARKED LOW PRESSURE AREA**

**D: DEPRESSION (17-27 KT)**

**DD: DEEP DEPRESSION (28-33 KT)**

**CS: CYCLONIC STORM (34-47 KT)**

**SCS: SEVERE CYCLONIC STORM (48-63KT)**

**VSCS: VERY SEVERE CYCLONIC STORM (64-89 KT)**

**ESCS: EXTREMELY SEVERE CYCLONIC STORM (90-119 KT)**

**SuCS: SUPER CYCLONIC STORM ( $\geq$  120 KT)**

LESS THAN 34 KT

34-47 KT

$\geq$  48 KT

OBSERVED TRACK

FORECAST TRACK

CONE OF UNCERTAINTY

Contact: Cyclone Warning Division, Office of the Director General of Meteorology,

India Meteorological Department, Ministry of Earth Sciences.

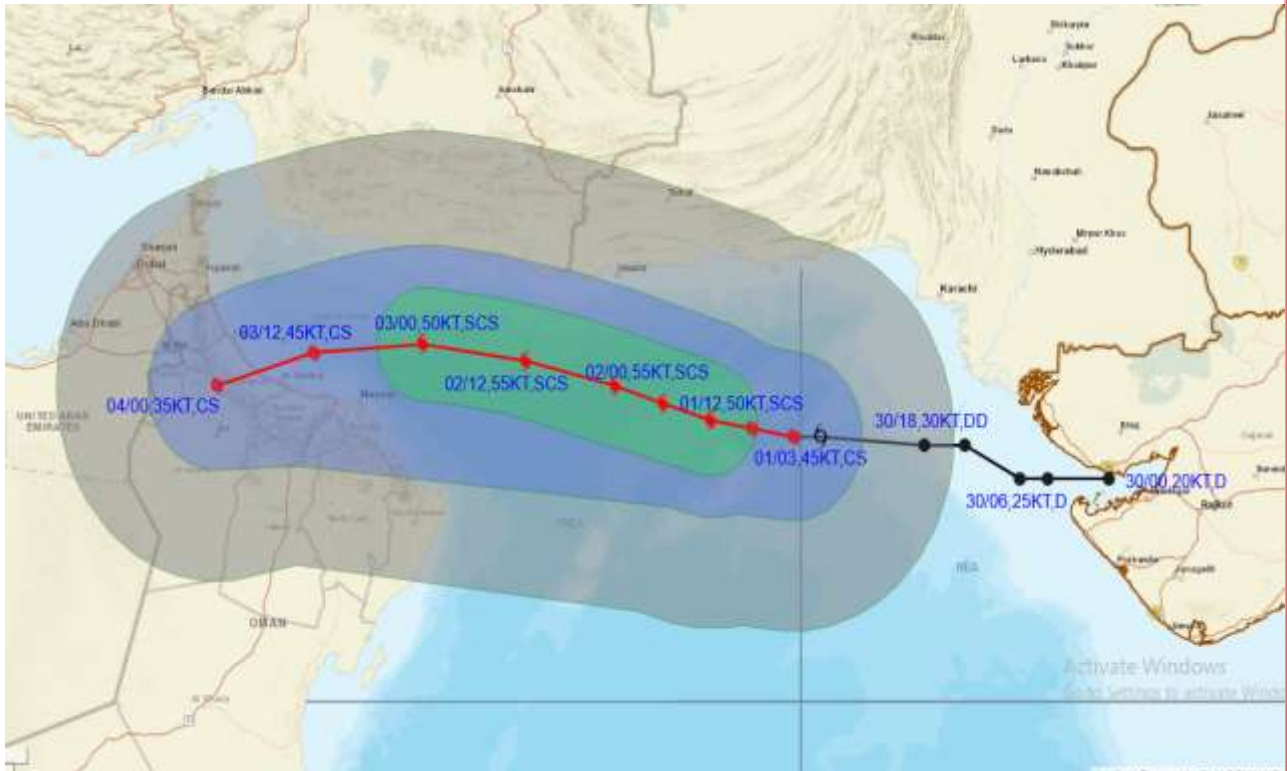
Phone: (91) 11-24652484, FAX: (91) 11-24643128, 24623220, E-mail: [cwdhq2008@gmail.com](mailto:cwdhq2008@gmail.com), Website: [rsmcnewdelhi.imd.gov.in](http://rsmcnewdelhi.imd.gov.in)

Spatial rainfall distribution: Isolated: <25%, A few: 26-50%, Many: 51-75%, Most: 76-100%

Rainfall amount (mm): Heavy rain: 64.5 – 115.5, Very heavy rain: 115.6 – 204.4, Extremely heavy rain: 204.5 or more.



**OBSERVED AND FORECAST TRACK ALONGWITH QUADRANT WIND DISTRIBUTION OF CYCLONIC STORM "SHAHEEN" OVER NORTHEAST ARABIAN SEA BASED ON 0300 UTC OF 1ST OCTOBER, 2021**



**DATE/TIME IN UTC**

IST=UTC + 0530

L: LOW PRESSURE AREA

WML: WELL MARKED LOW PRESSURE AREA

D: DEPRESSION (17-27 KT)

DD: DEEP DEPRESSION (28-33 KT)

CS: CYCLONIC STORM (34-47 KT)

SCS: SEVERE CYCLONIC STORM (48-63KT)

VSCS: VERY SEVERE CYCLONIC STORM (64-89 KT)

ESCS: EXTREMELY SEVERE CYCLONIC STORM (90-119 KT)

SuCS: SUPER CYCLONIC STORM (≥ 120 KT)

- LESS THAN 34 KT
- 34-47 KT
- ≥ 48 KT
- OBSERVED TRACK
- FORECAST TRACK
- ▲ CONE OF UNCERTAINTY
- AREA OF MAXIMUM SUSTAINED WIND SPEED:
- 28-33 KT (52-61 KMPH)
- 34-49 KT (62-91 KMPH)
- 50-63 KT (92-117 KMPH)
- ≥ 64 KT (≥118 KMPH)

**IMPACT OVER THE SEA**

MSW (knot/kmph)	Impact	Action
28-33 (52-61)	Very rough seas	Total suspension of fishing operations
34-49 (62-91)	High to very high seas	Total suspension of fishing operations
50-63 (92-117)	Very high seas	Total suspension of fishing operations
≥ 64 (≥118)	Phenomenal	Total suspension of fishing operations

Contact: Cyclone Warning Division, Office of the Director General of Meteorology, India Meteorological Department, Ministry of Earth Sciences.

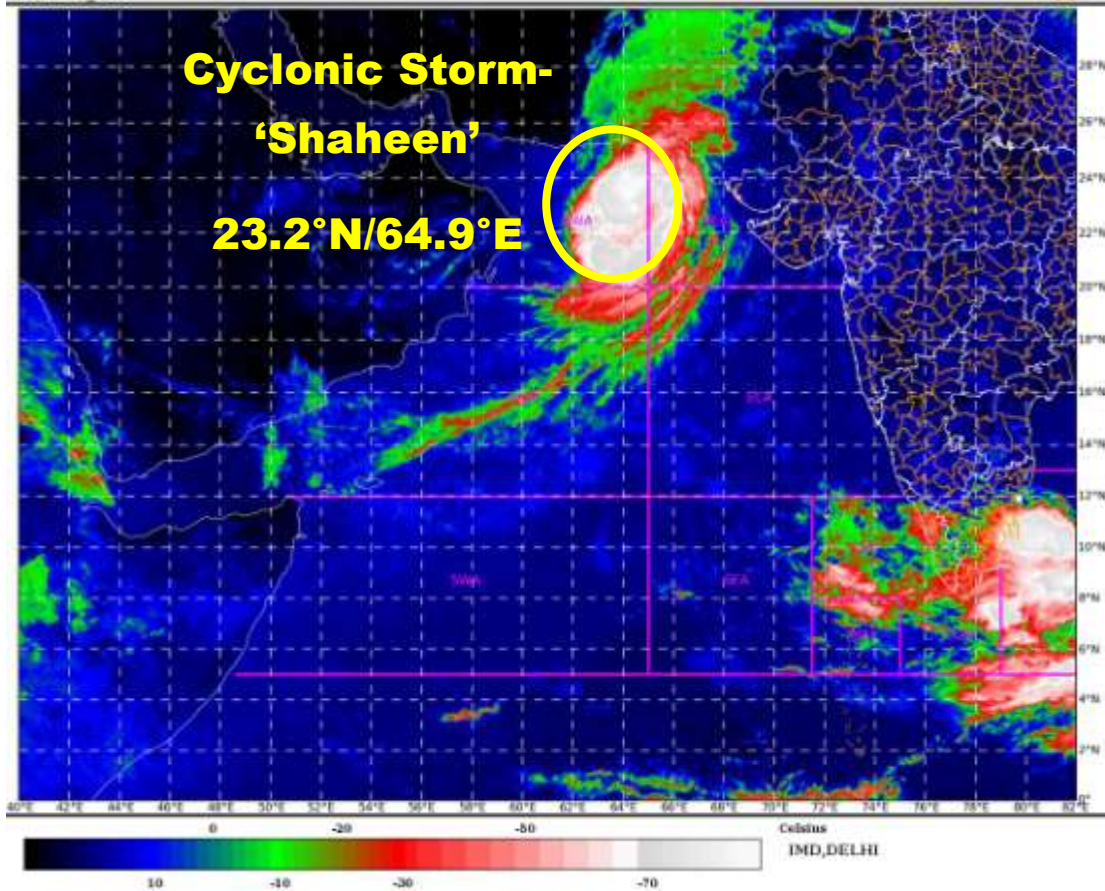
Phone: (91) 11-24652484, FAX: (91) 11-24643128, 24623220, E-mail: [cwdhq2008@gmail.com](mailto:cwdhq2008@gmail.com), Website: [rsmcnewdelhi.imd.gov.in](http://rsmcnewdelhi.imd.gov.in)

Spatial rainfall distribution: Isolated: <25%, A few: 26-50%, Many: 51-75%, Most: 76-100%

Rainfall amount (mm): Heavy rain: 64.5 – 115.5, Very heavy rain: 115.6 – 204.4, Extremely heavy rain: 204.5 or more.

SAT : INSAT-3D IMG  
IMG\_TIR1\_TEMP 10.8 um  
ARABIAN SEA

01-10-2021(0530 to 0557) GMT  
01-10-2021(1100 to 1127) IST



Contact: Cyclone Warning Division, Office of the Director General of Meteorology,  
India Meteorological Department, Ministry of Earth Sciences.

Phone: (91) 11-24652484, FAX: (91) 11-24643128, 24623220, E-mail: [cwdhq2008@gmail.com](mailto:cwdhq2008@gmail.com), Website: [rsmcnewdelhi.imd.gov.in](http://rsmcnewdelhi.imd.gov.in)

Spatial rainfall distribution: Isolated: <25%, A few: 26-50%, Many: 51-75%, Most: 76-100%

Rainfall amount (mm): Heavy rain: 64.5 – 115.5, Very heavy rain: 115.6 – 204.4, Extremely heavy rain: 204.5 or more.